



**REGIONAL SPECIALISED METEOROLOGICAL CENTRE-TROPICAL CYCLONES, NEW DELHI**  
**TROPICAL WEATHER OUTLOOK**

**DEMS-RSMC TROPICAL CYCLONES NEW DELHI DATED 04.08.2021**

**TROPICAL WEATHER OUTLOOK FOR NORTH INDIAN OCEAN (THE BAY OF BENGAL AND ARABIAN SEA) VALID FOR NEXT 120 HOURS ISSUED AT 0600 UTC OF 04.08.2021 BASED ON 0300 UTC OF 04.08.2021.**

**BAY OF BENGAL:**

YESTERDAY'S, WELL MARKED LOW PRESSURE AREA OVER NORTHWEST MADHYA PRADESH & NEIGHBOURHOOD NOW LIES AS LOW PRESSURE AREA OVER THE SAME REGION. AT 0300UTC OF TODAY, THE 4TH AUGUST 2021.

CONVECTION ASSOCIATED WITH THE LOW PRESSURE AREA OVER NORTHWEST MADHYA PRADESH OVERLAND. ASSOCIATED BROKEN LOW AND MEDIUM CLOUDS WITH EMBEDDED MODERATE TO INTENSE CONVECTION LAY OVER EXTREME EAST RAJASTHAN AND ISOLATED WEAK CONVECTION OVER NORTHWEST MADHYA PRADESH.

SCATTERED LOW AND MEDIUM CLOUDS WITH EMBEDDED INTENSE TO VERY INTENSE CONVECTION LAY OVER NORTH ADJOINING EASTCENTRAL BAY OF BENGAL AND GULF OF MARTABAN. SCATTERED LOW AND MEDIUM CLOUDS WITH EMBEDDED MODERATE TO INTENSE CONVECTION LAY OVER SOUTH BAY OF BENGAL AND ANDAMAN SEA AND ISOLATED WEAK TO MODERATE CONVECTION OVER REST BAY OF BENGAL.

**PROBABILITY OF CYCLOGENESIS (FORMATION OF DEPRESSION) DURING NEXT 120 HRS):**

24 HOURS	24-48 HOURS	48-72 HOURS	72-96 HOURS	96-120 HOURS
NIL	NIL	NIL	NIL	NIL

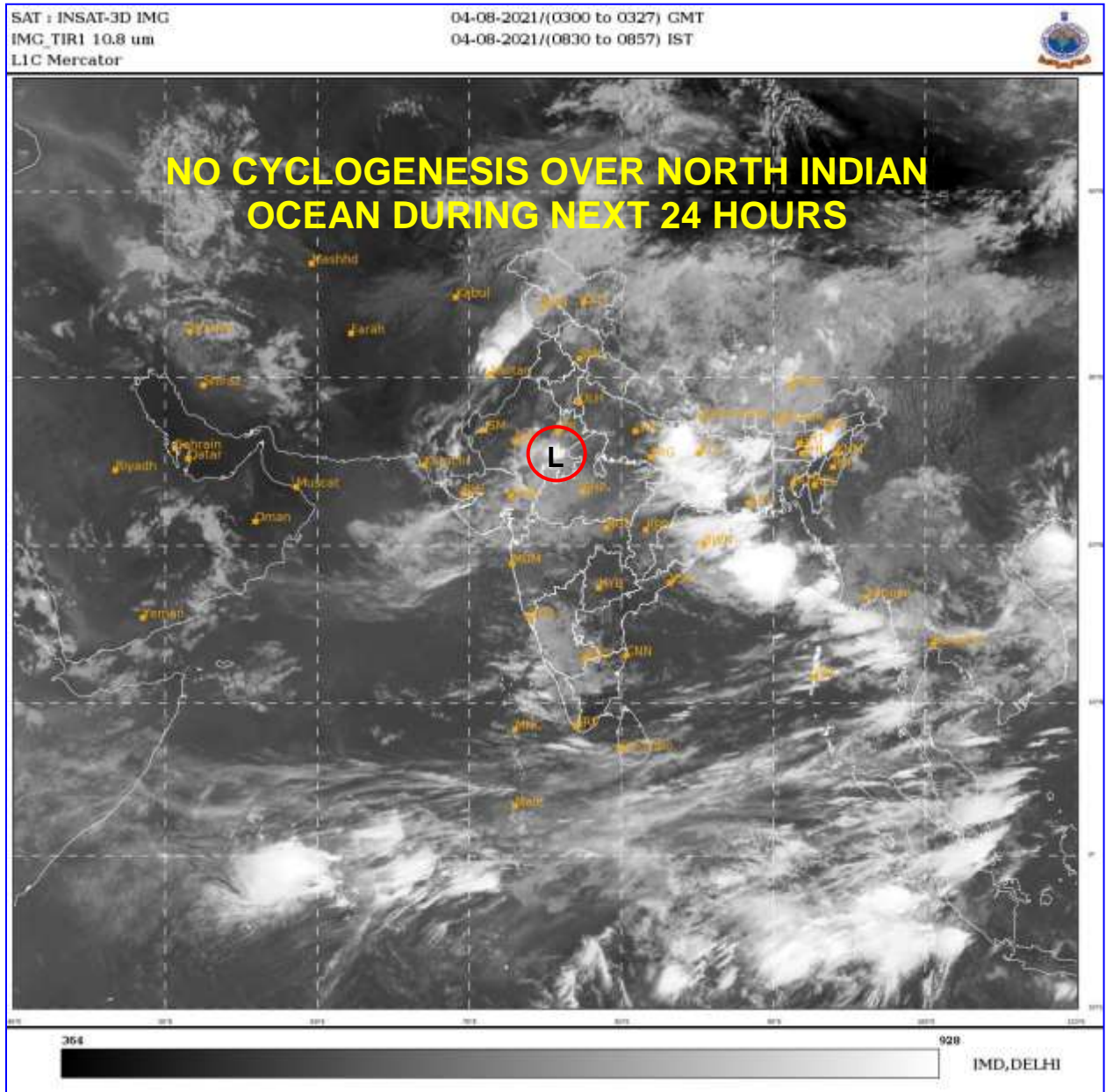
**ARABIAN SEA:**

SCATTERED LOW AND MEDIUM CLOUDS WITH EMBEDDED WEAK TO MODERATE CONVECTION LAY OVER NORTHEAST ADJOINING EASTCENTRAL ARABIAN SEA, GULF OF CAMBAY, GULF OF KUTCH AND ALSO OVER SOUTHEAST AREABIAN SEA & COMORIN REGION.

**PROBABILITY OF CYCLOGENESIS (FORMATION OF DEPRESSION) DURING NEXT 120 HRS):**

24 HOURS	24-48 HOURS	48-72 HOURS	72-96 HOURS	96-120 HOURS
NIL	NIL	NIL	NIL	NIL

**REMARKS:** NIL



- **L STANDS FOR LOW PRESSURE AREA**